



MANIBond 7th Gen

STRONG BOND WITH SELF-ETCH
TECHNIQUE

Self-etching light-curing
one-component bonding
MADE IN GERMANY



MANI


MANIBond 7th Gen – your partner for strong adhesion!

The self-etching, light-curing, single-component adhesive system for secure and reliable bonding of restorative and luting composites to natural teeth.

INDICATIONS

- ▼ Direct light-curing composite restorations on natural tooth structure
- ▼ Indirect restorations made of composite and ceramic (inlays, onlays, veneers, crowns) with light-curing or dual-curing luting composites
- ▼ Repair of fractured composite fillings

PRODUCT FEATURES

- ▼ Can be used with both self-etch and selective-etch techniques
 - ▼ Gentle etching to minimize the risk of hypersensitivity
 - ▼ Pleasant honey-like consistency
 - ▼ **Etching, priming, and bonding in a single step**
 - ▼ Requires only a single application with a short curing time of 10 seconds.
 - ▼ **Strong adhesive strength to dentin 29 MPa and 31 MPa enamel**
 - ▼ No cooling required
- 

STEP BY STEP

1 CAVITY PREPARATION

Cavity preparation according to the principle of adhesive restoration technique.

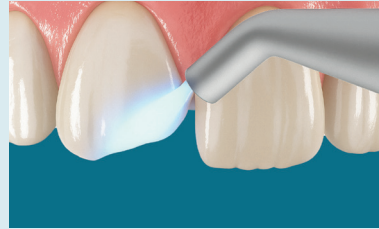
2 APPLICATION OF THE ADHESIVE:



2.1 Self-etch procedure: Direct application without additional etching. Apply ManiBond for 20 seconds.

OR

Selective-etch procedure: Apply an etching gel to the enamel for 30 seconds, then rinse thoroughly and dry the surface with oil free compressed air. Apply ManiBond for 20 seconds on enamel and dentin.



2.2 Blow gently with oil-free compressed air.



2.3 Light-cure the adhesive with a curing light for 10 seconds.

3 RESTORATION

Use restoration material in accordance with the respective manufacturer's instructions.

MANIBond 7th Gen IN COMPARISON

MEASUREMENTS*

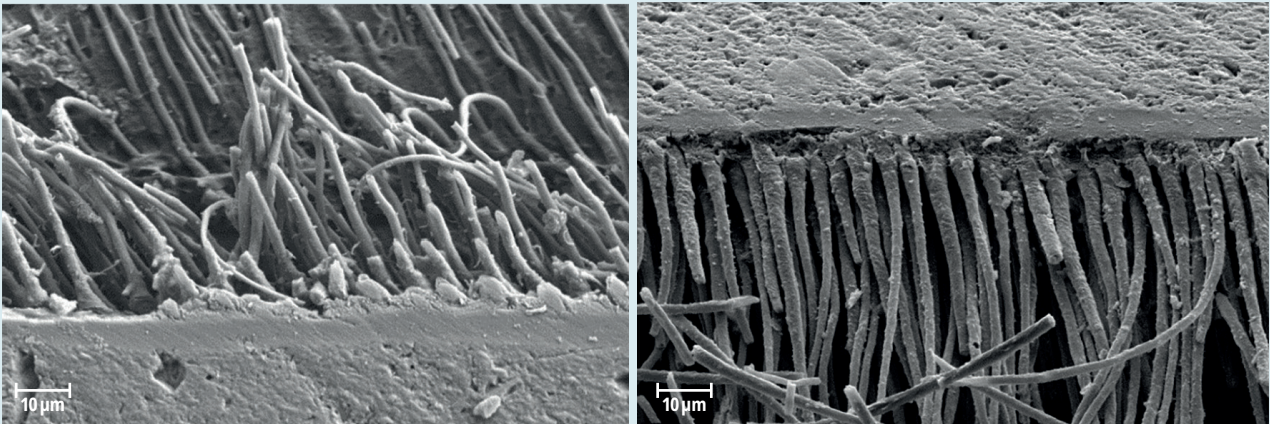
	MANIBond 7th Gen	Competitor 1	Competitor 2	Competitor 3
Processing Time	30s	Max. 23s	Max. 45s	Max. 20s
Adhesive bond to dentin and enamel ¹⁾	D=29 MPa E=31 MPa	D=22 MPa E=17 MPa	D=24 MPa E=13 MPa	D=25 MPa E=20 MPa

MANIBond 7th Gen impresses with the best measurements in the comparable market.

¹⁾ Measurement according to ISO 29022:2013, in-house data.

* All technical data are average values and may vary slightly in each delivery batch.

MAXIMUM ADHESIVE FORCE!



The image shows that the dentinal tubules are optimally penetrated by the application of **MANIBond 7th Gen**, thus achieving excellent bonding with the surface.

Image: Electron microscope from the Department of Conservative Dentistry and Periodontology at the University of Munich Medical Center

PHYSICAL DATA*

	Adhesion Strength	Etching Times
Additional enamel etching with etching gel ¹⁾	37 MPa	Etching gel for 30 seconds
Self-etch mode in dentin – without additional etching gel application ¹⁾	29 MPa	self-etching
Self-etch mode in the enamel – without additional etching gel application ¹⁾	31 MPa	self-etching

MANIBond 7th Gen impresses with scientifically proven top performance: In an independent in vitro test conducted by Dr. U. Blunck at Charité, the adhesive achieved outstanding results. **MANIBond 7th Gen** has excellent adhesion values, high marginal integrity, and saves valuable time in everyday practice.

¹⁾ Internal measurement in accordance with ISO 29022:13

* All technical data are average values and may vary slightly in each delivery batch.

Content
5ml bottle



eIFU ↑



MANI MEDICAL GERMANY GmbH
Hertha-Sponer-Straße 2
61191 Rosbach v.d. Höhe
info@mani-germany.com
www.mani-germany.com

MANI